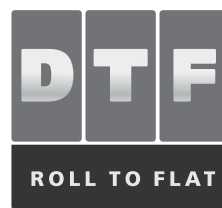


D I R E C T - T O - F I L M P R I N T E R

FLATDOG[®]
C O T T O N P R I N T M A C H I N E



INSTALLATION PROCEDURE FLATDOG DTF

VERSION 1.2

EN



INSTALLATION PROCEDURE

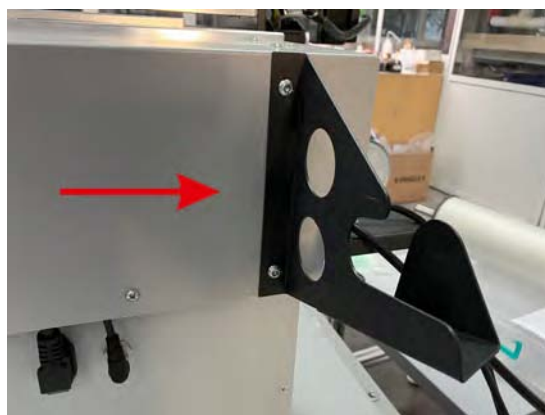
Flatdog DTF (Pro, Mini, Vega)

- 1 Place the machine on a level, stable base. Make sure it is horizontal.

- 2 Turn on the couplings in the rear part of the machine



- 3 Mount the roller holders



- 4 Install the ventilation system directed in the direction that suits you



INSTALLATION PROCEDURE

5

Release the carriage lock



6

Connect the power cables - 2 pcs.

7

Turn on the machine from the main switch.



8

Make sure that the machine rail assembly can move back free to the end



INSTALLATION PROCEDURE

Turn on the printer from the touch screen

The printer will initialize:

- A. The rail assembly moves back to the end of the printer (Y direction).
- B. The capping station goes down, the carriage moves along X, and the capping station rises.

If the procedure is not carried out, contact a service technician.

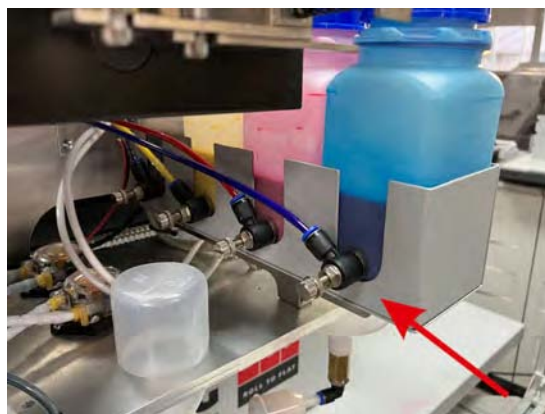


9

With syringe pull out the remaining transport fluid from the CMYK and White tanks and discard it.

10

Open the taps of the CMYK inks all the way



11

Start a procedure for pulling out the transport liquid by activating the "pump WHITE" and "pump CMYK" buttons from the touch screen in settings menu.

Do it 4-5 times to make sure that air is moving in the tubes.

INSTALLATION PROCEDURE

12 Pour ink into the tanks.

A. White



B. Color

Be careful for the CMYK color order, written on the tanks.

Do not exceed the maximum level.

When working, keep the ink levels within the perimeter of the specified visual area. (for the Vega model - the VEGA sign – from bottom to the top).



13 Start the procedure of filling the ink system by activating the buttons "pump WHITE" and "pump CMYK" from the settings menu on the touch screen display.

Do it 4-5 times to make sure that there is no air in the tubes, only ink.

14 Discard the waste ink tank by carefully unscrewing the tank.

Put the tank back.
Screw to the cap gently.

Run a big cleaning, then a small cleaning from the computer software (BetterPrinter).



INSTALLATION PROCEDURE

15

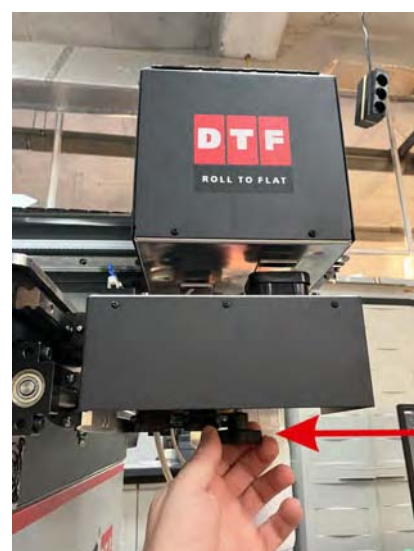
Check the distance between the plate and the print heads at the four corners of the plate by following the procedure:

- A. Make sure the printer is turned on from the touch screen display. Move it along the Y axis so that the carriage rests against the adjustment bolts at the front



A.1

Manually move down the capping.



A.2

Open enough for the heads to pass without touching the wipers

Press the emergency button. Carefully, manually move the carriage first to the left and then to the right side of the plate.

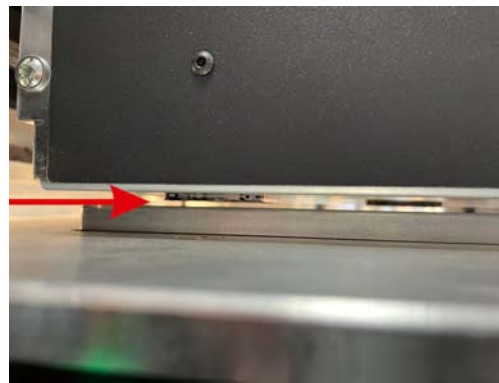


INSTALLATION PROCEDURE

A.3

Measure the distance to the heads on both sides using gauge plates

It should be 1.7 mm. Adjust if necessary by turning the adjustment bolts (clockwise distance decreases).



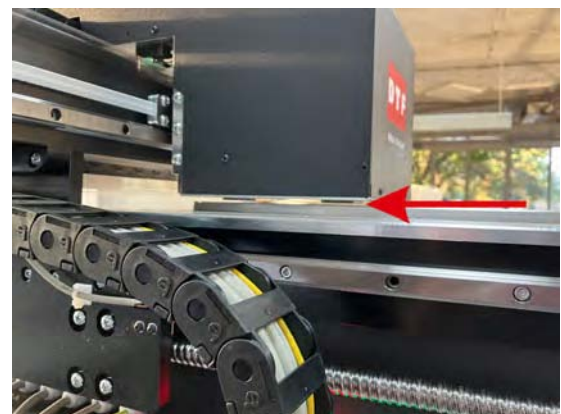
A.4

Retract the carriage over the cappings, release the emergency button and move the rail assembly along the Y axis so that the carriage rests against the adjustment bolts at the rear



B. Repeat the procedure for the back of the plate

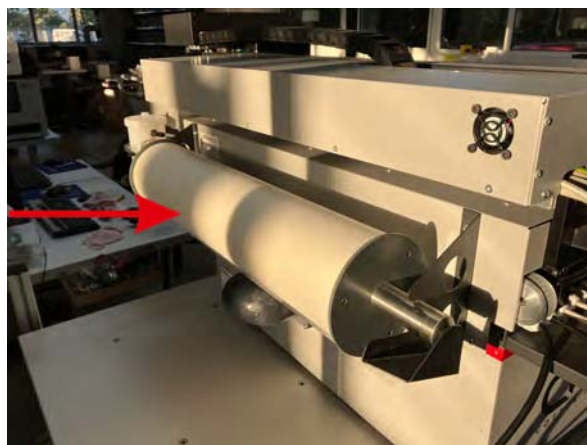
Recheck the distances at the four edges and readjust as necessary.



INSTALLATION PROCEDURE

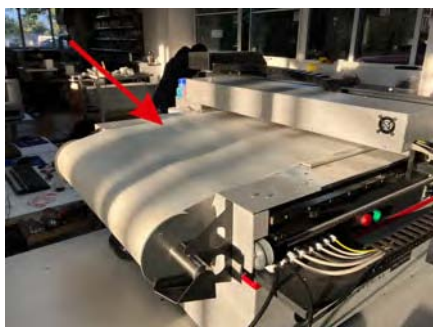
16

Put the roll with the foil on the holder.



17

Load the foil on the plate



Start the computer and connect the machine with the network cable to the mainboard of the computer. The extra network card is for internet connection.

Start the control software (BetterPrinter). The printer initializes and the capping station goes down, the carriage moves along X, and the capping station rises and locks the heads. A green indicator should light up in the lower left corner of the monitor to indicate successfully connection of the printer to the computer.

If the procedure is not carried out, contact a service technician.

Put a transparent film on the plate and test the nozzles.

If the nozzle test is not good, perform cleaning. Do the nozzle test again and cleaning until it is good.